



Quilter's Rule™

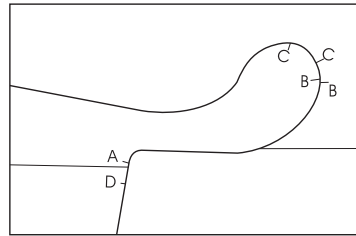
We're More Than Just Rulers!

817 Mohr Avenue ♦ Waterford, WI 53185
www.quiltersrule.com

Quilter's Rule is proud to present our newest tool.

Feather Tool

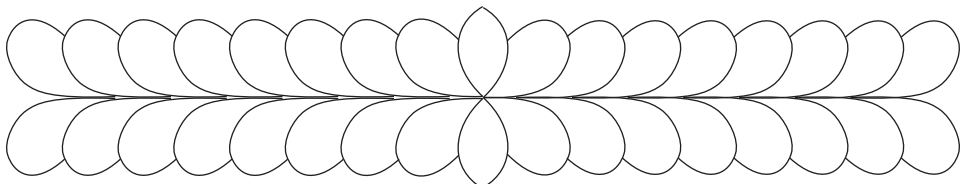
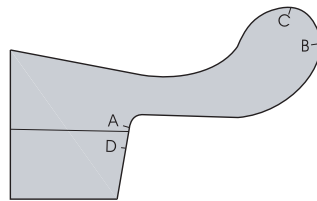
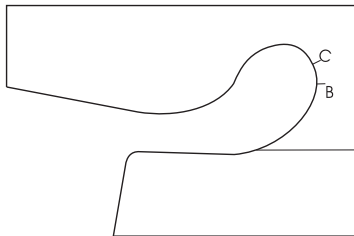
Design by Nancy Johnston



What the Feather Tool can do:

- * **Straight line single sided feather.**
- * **Straight line double sided feather.**
- * **Curved line single sided feather.**
- * **Curved line double sided feather.**
- * **Feathered wreath - inside and outside both sides or one side only.**

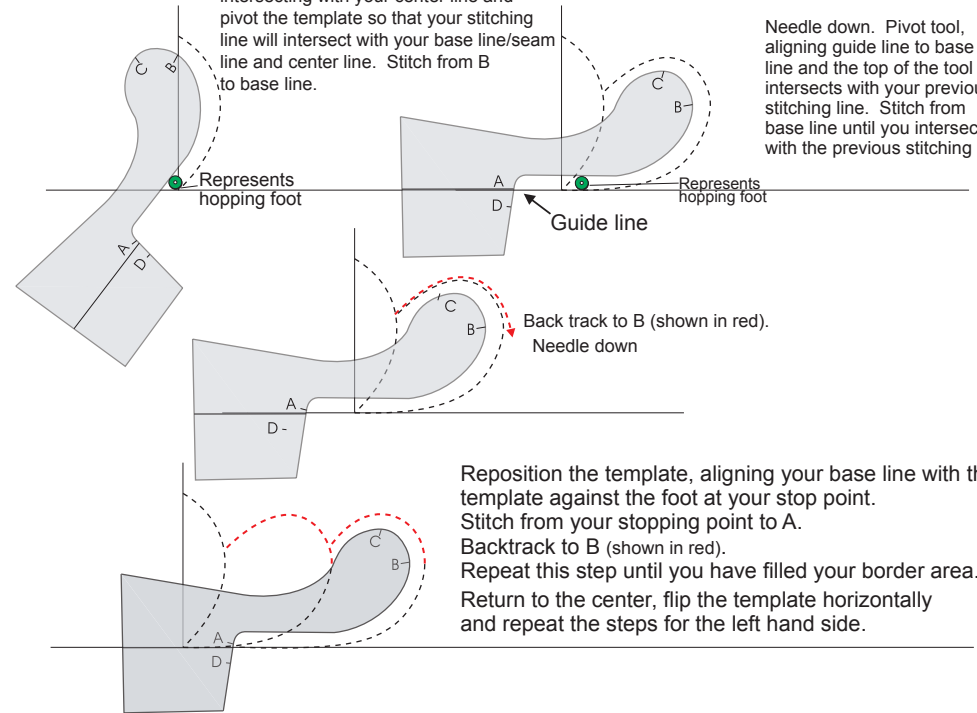
Two Tools - Two Feather Sizes



Mark in a base line (straight line) or use the seam line.
Mark your center line.

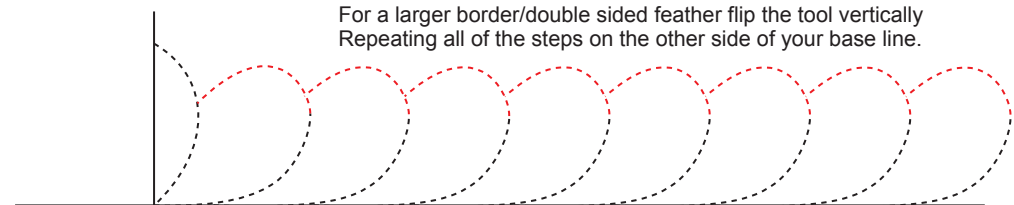
Position the template with B at the top intersecting with your center line and pivot the template so that your stitching line will intersect with your base line/seam line and center line. Stitch from B to base line.

Needle down. Pivot tool, aligning guide line to base line and the top of the tool intersects with your previous stitching line. Stitch from base line until you intersect with the previous stitching line.

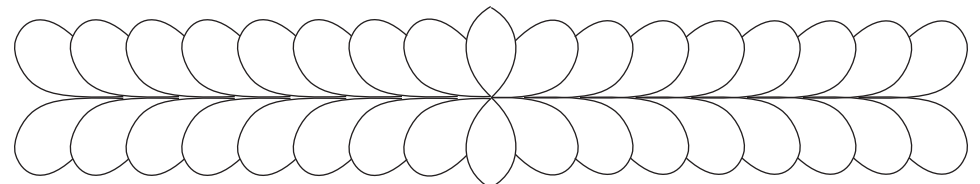


Reposition the template, aligning your base line with the template against the foot at your stop point. Stitch from your stopping point to A. Backtrack to B (shown in red). Repeat this step until you have filled your border area. Return to the center, flip the template horizontally and repeat the steps for the left hand side.

For a larger border/double sided feather flip the tool vertically
Repeating all of the steps on the other side of your base line.



Red stitching lines indicate Backtracking



Relax and have fun playing!