



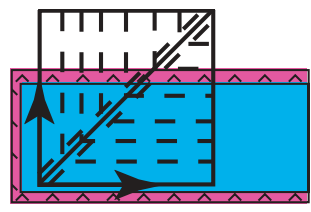
Instructions

Magic Quarter-Square Ruler

We've done the math, all you have to do is choose a finished size, cut, mark, & sew!

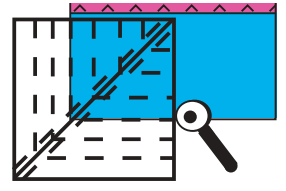
Remember: The numbered lines indicate the finished size of the square.

For best results, use a .05 mechanical pencil held at a right angle to ruler.



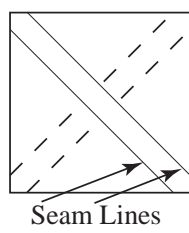
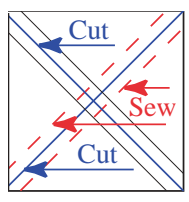
Layer two fabrics, right sides together with the lighter fabric on top. Use ruler to square up corners of the layered fabrics. (Figure 1)

Place the dashed lines of the desired square on the corner of the fabrics. Cut out the square. (Figure 2)



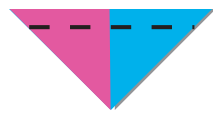
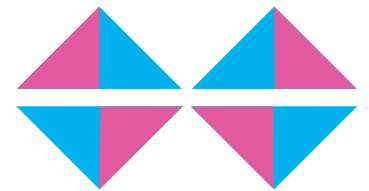
Without moving the ruler, use a pencil to draw lines on fabric through the slots in the ruler.

Rotate the ruler 90°. Draw the diagonal lines on fabric through the slots in the ruler.

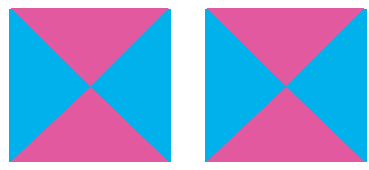


Sew on the two outside lines of one center diagonal line. Cut on both center diagonal lines. (Figure 3)

Press seam allowances toward the dark fabric. There will be four sections. (Figure 4)



Sew two sections, right sides together, with opposite colors on top. Use the seam lines in Figure 3 as the sewing lines. (Figure 5)



When squares are pressed, "dog ears" will appear. (Figure 6) Trim "dog ears" even with edges of square.

Yields two quarter-square triangles. (Figure 6)

