



Instructions

Lap Boards

covers the uses of 12 1/2", 16 1/2", and 24 1/2" lap boards

The lines and numbers are molded into the ruler for perfect accuracy.

The Quilter's Rule Square Block Lap Boards give you a sturdy working lap size surface to help you keep your pieces together. Great for traveling and working on all handiwork or as a writing surface. Is an ideal measuring companion for use with rotary cutters. Unlimited uses: Measuring your applique base square, Cathedral window base square and center; folded stars squares; and much more.



How To Use:

1. Always work with a piece of fabric that has been 90° squared off in the left hand corner as illustrated **(A)**.

This is your main fabric preparation for squaring up your squares. This ensures a perfect square when finished cutting.

2. Using the straight 90° corner of your fabric slide the lap board to the desired **unfinished** square size. **Remember:** Always add an extra half inch to create your 1/4" seam allowance around the square. To make a 12" finished square, for example, after all seam allowances have been used, you must cut out a 12-1/2" square.

3. Apply light hand pressure with one hand spread open flat on top of the lap board surface. This assures keeping the lap board in place.

4a. Using a rotary cutter - Simply run the rotary cutter along the two outer edges to cut. See illustration **(B)**.

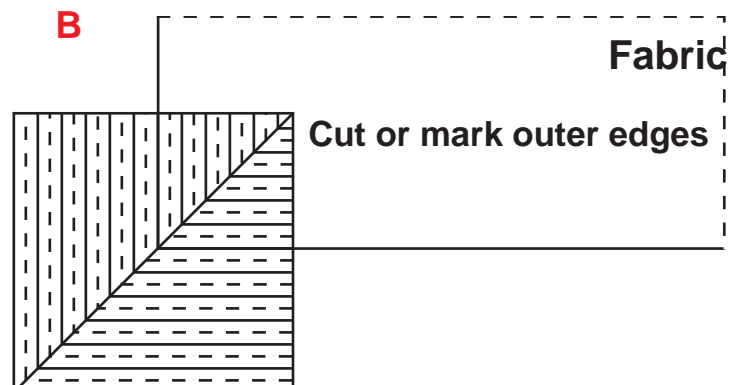
4b. Marking edges for cutting - Mark around the two outer edges of the lap board. Remove board and cut. **Illustration B.**

You now have a perfect square without all the fuss of graph paper and measuring.

A



B



Care of Ruler: Clean with soap and water or a non-ammonia glass or window cleaner.